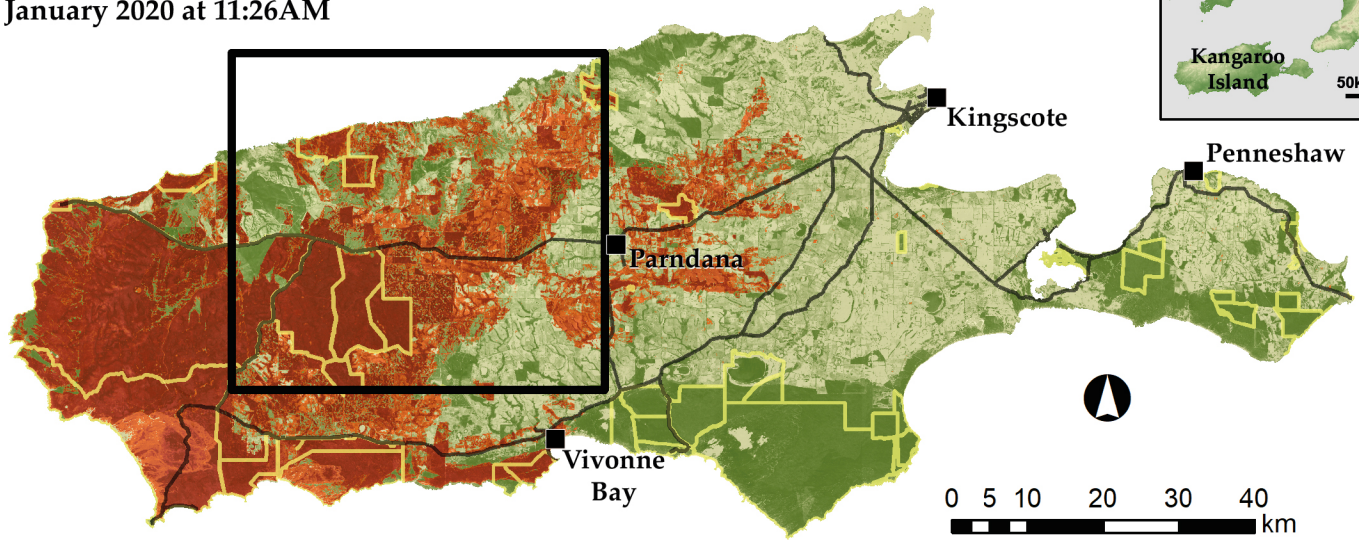
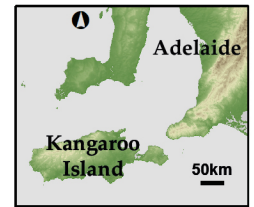


Kangaroo Island Bushfire Impacted Areas - Western River Area

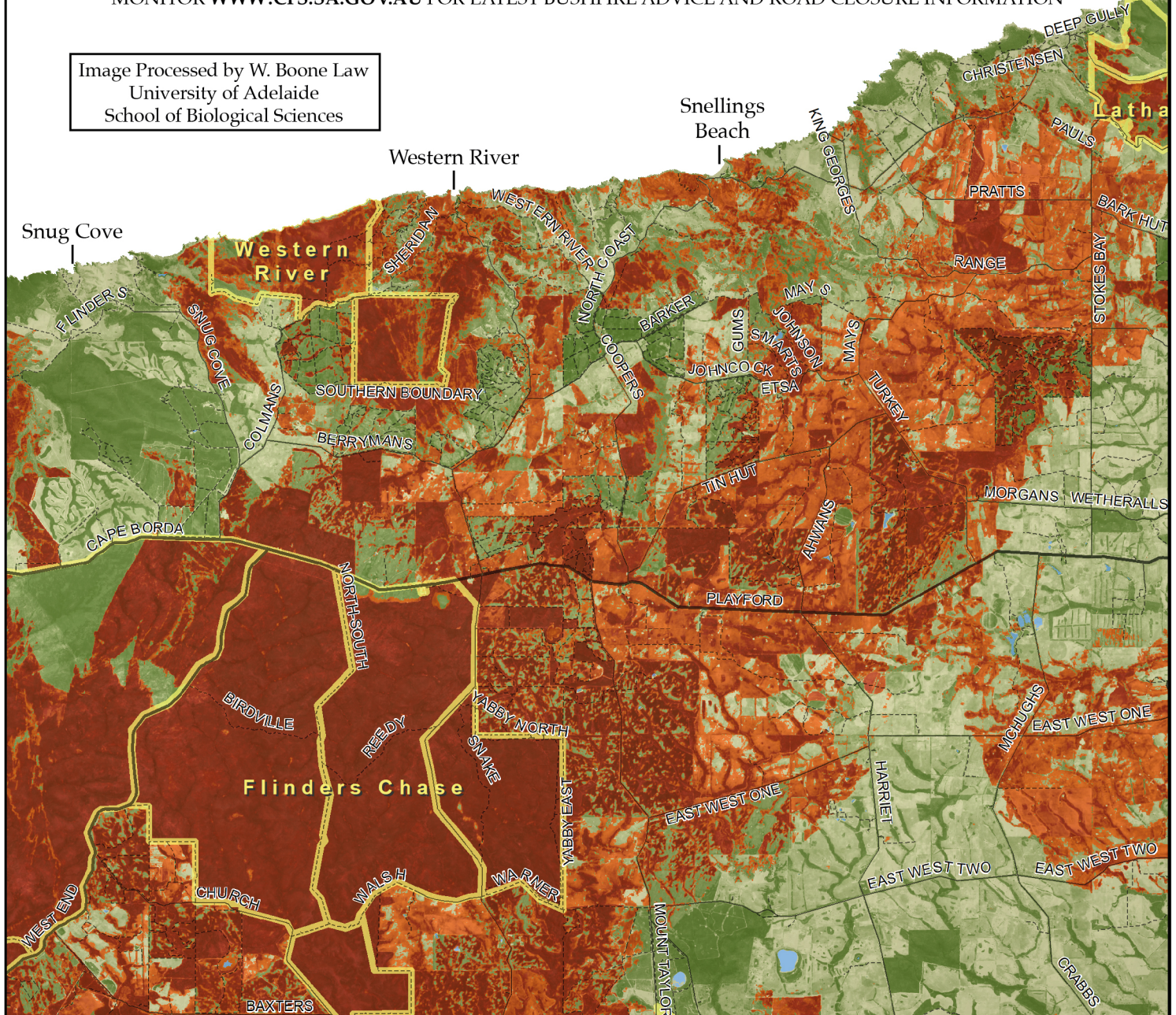
Sentinel-2 satellite image, processed to discriminate burnt areas

30 January 2020 at 11:26AM



DISCLAIMER: UNVERIFIED MAP - FALSE POSITIVES AND INACCURACIES MAY EXIST - DO NOT RELY ON THIS IMAGERY FOR FIRE PLANNING OR YOUR PERSONAL SAFETY
 MONITOR WWW.CFS.SA.GOV.AU FOR LATEST BUSHFIRE ADVICE AND ROAD CLOSURE INFORMATION

Image Processed by W. Boone Law
 University of Adelaide
 School of Biological Sciences



Sentinel-2 acquisition date: 30 January 2020, 11:26AM
 Processing method: Normalised burn ratio
 Spatial resolution: ~10m
 Contact: W. Boone Law, wallace.law@adelaide.edu.au

Vegetation Health

