

# Kangaroo Island Bushfire Impacted Areas - Cape De Couedic Area

Sentinel-2 satellite image, processed to discriminate burnt areas

30 January 2020 at 11:26AM

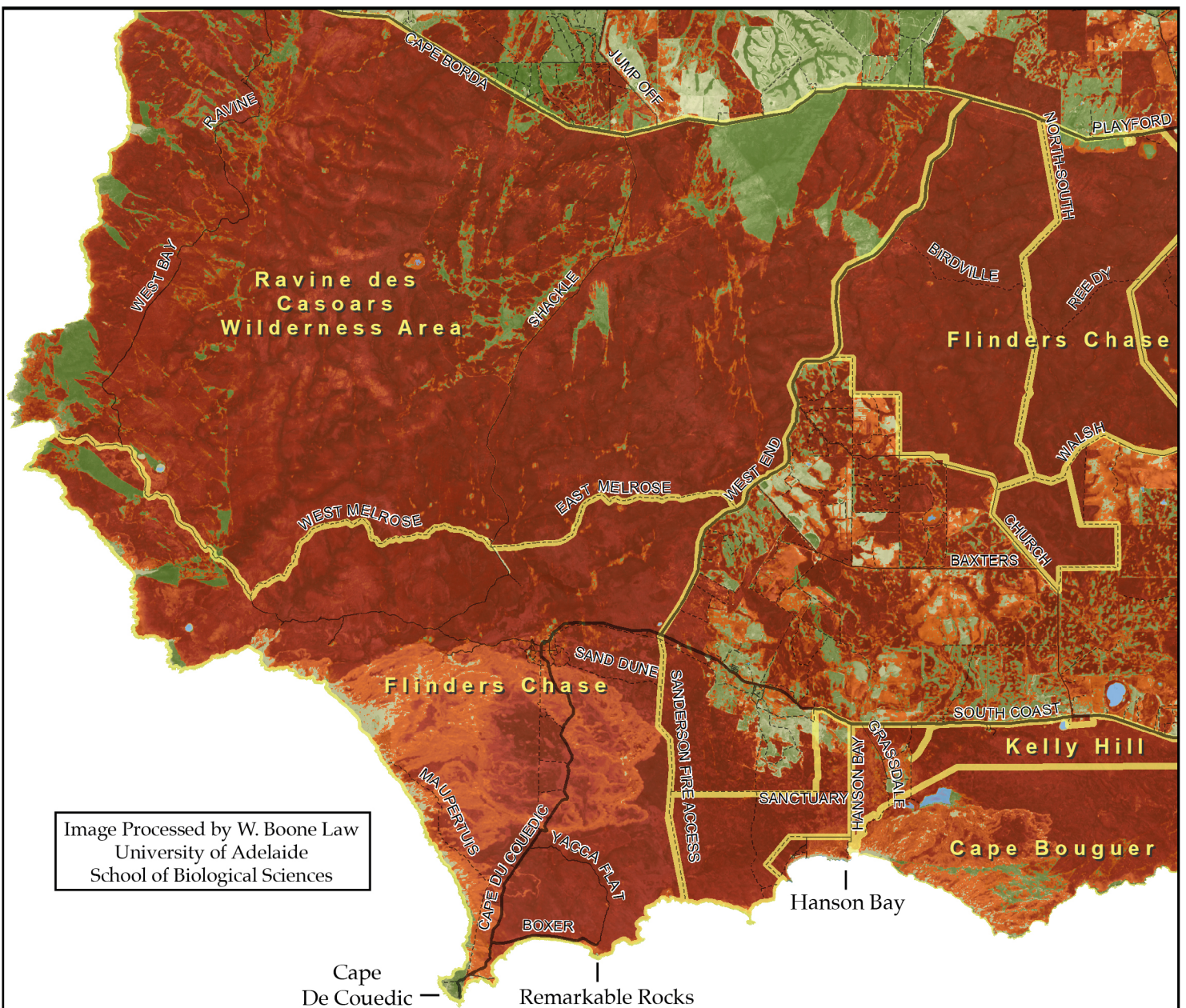
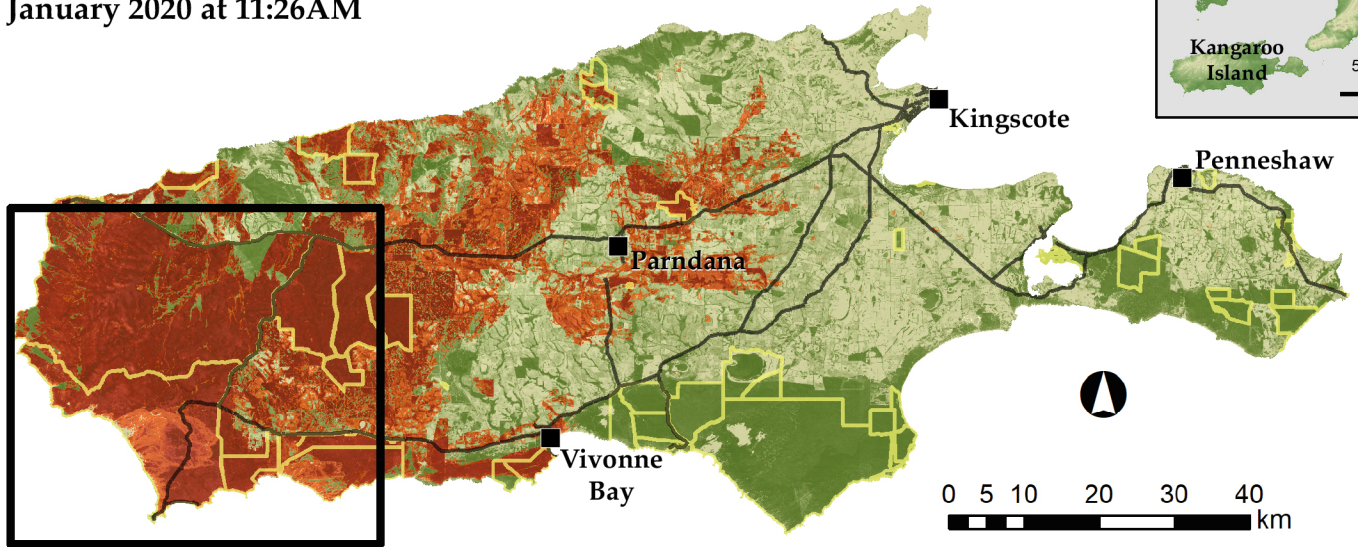
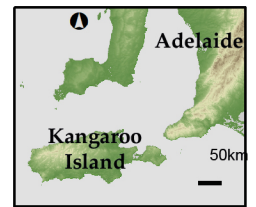


Image Processed by W. Boone Law  
University of Adelaide  
School of Biological Sciences

MONITOR [WWW.CFS.SA.GOV.AU](http://WWW.CFS.SA.GOV.AU) FOR LATEST BUSHFIRE ADVICE AND ROAD CLOSURE INFORMATION

DISCLAIMER: UNVERIFIED MAP - FALSE POSITIVES AND INACCURACIES MAY EXIST - DO NOT RELY ON THIS IMAGERY FOR FIRE PLANNING OR YOUR PERSONAL SAFETY

Sentinel-2 acquisition date: 30 January 2020, 11:26AM  
Processing method: Normalised Burn Ratio  
Spatial resolution: ~10m  
Contact: W. Boone Law, [wallace.law@adelaide.edu.au](mailto:wallace.law@adelaide.edu.au)

### Vegetation Health

